

Antibody Data

Product SKU:	CAB0185	Observed MW	35kDa
Applications:	WB; IHC	Calculated MW	34kDa
Reactivity:	Human, Mouse, Rat		

Immunogen Information:

Immunogen: Recombinant fusion protein containing a sequence corresponding to amino acids 49-308 of human GDF15 (NP_004855.2).

Gene ID: 9518

Swiss Prot: Q99988

Synonyms: GDF15; GDF-15; MIC-1; MIC1; NAG-1; PDF; PLAB; PTGFB; growth/differentiation factor 15

Product Information:

Source: Rabbit

Isotype: IgG

Purification Method: Affinity purification

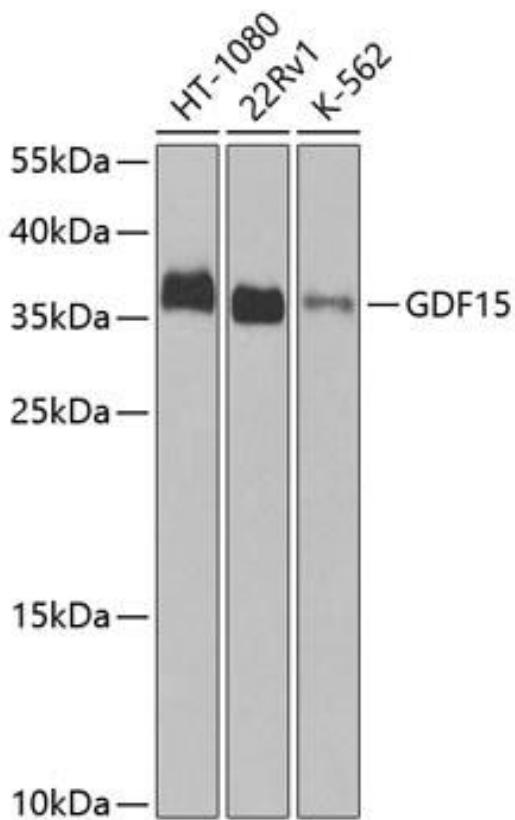
Storage: Store at -20°C. Avoid freeze / thaw cycles. Buffer: PBS with 0.02% sodium azide, 50% glycerol, pH7.3.

Recommended Dilution: WB 1:500 - 1:2000; IHC 1:50 - 1:100

Background:

The protein encoded by this gene belongs to the transforming growth factor-beta (TGF-beta) family. The protein is expressed in a broad range of cell types, acts as a pleiotropic cytokine and is involved in the stress response program of cells after cellular injury. Increased protein levels are associated with disease states such as tissue hypoxia, inflammation, acute injury and oxidative stress. The protein encoded by this gene belongs to the transforming growth factor-beta (TGF-beta) family. The protein is expressed in a broad range of cell types, acts as a pleiotropic cytokine and is involved in the stress response program of cells after cellular injury. Increased protein levels are associated with disease states such as tissue hypoxia, inflammation, acute injury and oxidative stress.

Images:



Western blot analysis of extracts of various cell lines, using GDF15 Antibody (CAB0185) at 1:1000 dilution. Secondary antibody: HRP Goat Anti-Rabbit IgG (H+L) (CABS014) at 1:10000 dilution. Lysates/proteins: 25ug per lane. Blocking buffer: 3% nonfat dry milk in TBST. Detection: ECL Basic Kit (AbGn00020). Exposure time: 90s.